

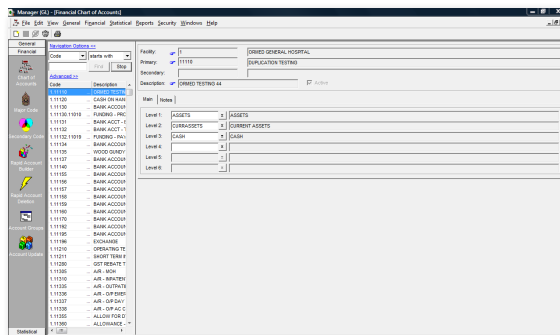


ORMED

# ORMED MIS™ General Ledger

## Powerful Financial planning at your fingertips

The heart of the ORMED MIS Finance Management system, Ormed General Ledger gathers data from across all Ormed suites to help you create, import, and report financial and statistical data. With a powerful chart of accounts, you have the ability to build your own major and secondary coding and track any financial and statistical data in your ORMED MIS system.

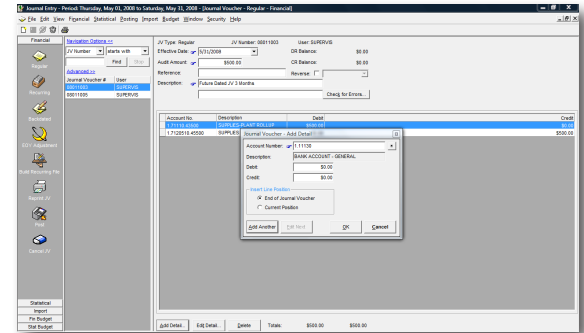


Ormed GL Manager

The Ormed General Ledger features a multi-user, multi-fund, and multi-site functionality that allows you to report funds and facilities as individual units or as part of a larger entity. This functionality contains a statistical ledger that matches all features offered with the financial general ledger.

- Customize account groups to enhance reporting requirements
- Use wild cards to build revenue and expense templates that can be applied to hundreds of departments
- Easily satisfy mandatory government reporting requirements with built-in reporting tools
- Streamline year-end reporting by mapping account code segments to particular equity accounts

## Intuitive Journal Entry and Budgeting



The GL Journal Entry screen

- Create recurring journal entries with start and stop dates
- Enter back-dated and future-dated journal entries
- Audit the prior fiscal year's adjustments
- Import transactions from third-party subsystems
- Cut and paste journal voucher details from Microsoft Excel® or Ormed's Discovery EIS tool
- Reprint any journal voucher postings, including postings from prior fiscal years
- Cancel journal vouchers or reverse them in future periods

## Easy and Efficient Subsystem Controller

- Manage subsystem imports and fiscal period end controls for all ORMED MIS suites from a single, central location
- Utilize system-supported 12- and 13-period fiscal schedules

## Flexible Reporting

- Build customized and easy-to-understand department reports
- Drill down to source documents at the accounts, journal vouchers, and subsystem level (i.e., receiving reports, invoices, payments, requisitions, inventory issues, pay register, timesheets, etc.)

- Export reports to industry standard electronic formats
- Accurately balance sub ledger accounts with the general ledger via easy-to-read reconciliation reports
- Access audit trail reports for unused journal vouchers, budget changes or additions, and inactive accounts

## Conclusion

Ormed General Ledger is the hub of the ORMED MIS system. With easy management of subsystem imports and fiscal periods, the ability to build and customize department reports, and to export reports to industry standard electronic formats, Ormed General Ledger brings peace of mind to all departments.



---

## ORMED INFORMATION SYSTEMS INC./LTD.

126, 10800 Lyndale Ave. S, Bloomington, MN USA 55420

1453 - 91 Street SW, Edmonton, AB Canada T6X 0W8

www.ormed.com **780.482.7200** info@ormed.com

**Toll-free US: 888.468.3519 Toll-free CA: 888.464.3172**

*© Ormed Information Systems Ltd. All rights reserved. Dec 2011.*

*ORMED MIS is a trademarks of Ormed Information Systems Ltd.*

*All other trademarks are the property of their respective owners.*

**ORMED**  
SMART BUSINESS • SMART SOFTWARE